



OCTOBER  
18 - Intake for Costick Show

OCTOBER 19 -  
Meeting/Program

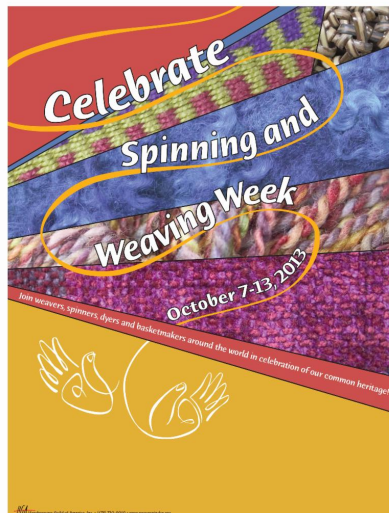
OCTOBER 19 to DECEMBER 6 -  
Costick Exhibit

## In This Issue

THF Catalog  
Spinning and Weaving Week  
October Program  
Presidents Letter  
MWG Costick Center Exhibit  
MWG Winter Market  
September Program

**2013 - 2014  
DUES ARE DUE**

- [Pay on-line](#)
- **At the next meeting**



October 7-13,  
2013 is  
Spinning and  
Weaving Week

[Celebrate our craft.](#)

## October Program

Michigan Weavers Guild  
will present it's October  
program on Saturday,  
October 19, 2013 at 12:30  
PM at the Peace Lutheran  
Church, 17029 West 13  
Mile Road, Southfield, MI  
48076-7749.

You are invited to come  
and hear and Cynthia  
LaMaide, Jeanne Norman  
Sarna, local fiber artists,  
who will lead a panel  
discussion on Various  
Aspects of Marketing for  
Textiles that include  
pricing, sales prep, group  
shows vs individual shows, media advertising, etc.



**Cynthia LaMaide**, artist and designer, is inspired by the body as  
a means to sculpt and construct art clothing. With a keen

## 2013 - 2014 SCHEDULE

### October 18, 2013 - December 6, 2013 - Exhibit

- Costick Center

### Saturday, October 19, 2013 - Program

- Speakers/Panelists: Cynthia LaMaide and Jeanne Norman Sarna
- Topic: Presentation and Panel Discussion on Various Aspects of Marketing for Textiles.

### Saturday, November 23, 2013 - Sale

- MWG Sale at the Costick Center
- Time: TBD
- Location: Costick Center

### Thursday-Saturday, January 16-18, 2014 - Workshop

- Leader: JoAnne Bachelder
- Three Shaft Weaves: When More is Less

### Saturday, January 18, 2014 - Program

- Speaker: JoAnne Bachelder
- Topic: Diaper: Is it a Noun, Verb or Adjective?

### February 15, 2014 - Workshop

- Leader: Boisali Biswas
- Topic: Dye Day

### Thursday-Saturday, March 20-22, 2014 - Workshop

- Leader: Elisabeth Hill
- Topic: Masters of Deflection

### Saturday, March 22, 2014 - Program

- Speaker: Elisabeth Hill
- Topic: Apron Strings

### Saturday, April 19, 2014

- Speakers/Panelists: Joan Sheridan and Mollie Fletcher
- Topic: From Start to Finish: Developing

knowledge of fiber arts, she transforms her materials to create garments in a multitude of ways by weaving, knitting, felting and hand painting each silhouette. Using quality fibers and innovative techniques her whimsical designs are made by hand art to wear. As a fiber artist, costume designer and fashion designer for films, music videos, and photo shoots in New York, Miami, and Detroit, she continuously has the opportunity to dress various clientele with her one of a kind designs.

[http://www.lamaide.com/Cynthia\\_LaMaide.html](http://www.lamaide.com/Cynthia_LaMaide.html)

**Jeanne Norman Sarna**, loves to learn new techniques. Her current focus is working as a fiber artist, mostly in wearable art, including jewelry, with mixed media sprinkled in. In 2002 she started Page Additions, working in the scrapbooking, stamping, craft and fiber industries. She designed a line of products that put movement on the scrapbook page, did the testing, development, and marketing. These include a line of Round Stamp Mounts & Zero Centered Rulers, marketed under Apple Pie Memories. As a product designer, she does wholesale trade shows, retail trade shows, online sales, marketing, working as a one-person company.

<http://www.pageadditions.com/contact/>

### MEETING SCHEDULE:

- 10:30 AM Board Meeting
- 11:30 PM Social Time - light refreshments. Bring your own bag lunch if you want.
- 12:00 PM General Meeting
- 12:30 PM Program

### MEETING LOCATION:

[Peace Lutheran Church](#)

17029 West 13 Mile Road  
Southfield, MI 48076-7749

## Presidents Letter - October 2013

Fall is here. Many people say that fall is their favorite season. I have kind of a love/hate relationship with fall. The changing leaves paint the landscape with such beautiful oranges, reds, russets and browns. As I stroll through the farmers market I find a wide variety of produce and come home to prepare wonderful soups and stews.

However the days are getting shorter and soon I will not longer be able to wander around in T-shirts.

My show season is winding down to a close I am still weaving to keep galleries supplied, but I no longer feel the frantic pressure to see how much I can produce.

Another benefit is that as it gets cold more and more people buy my wraps, shawls and scarves. Yes,



Themes, Concepts, Design and Color inspirations.

## Saturday, May 17, 2014

- Summer assignments, Stash Exchange, Potluck

### Normal Meeting Times and Location and Time (unless changed above)

- 10:30 AM Board Meeting
- 11:30 PM Social Time - light refreshments. Bring your own bag lunch if you want.
- 12:00 PM General Meeting
- 12:30 PM Program

### Peace Lutheran Church

17029 West 13 Mile Road  
Southfield, MI 48076-7749

## Next Newsletter Deadline

**Monday  
November 4, 2014**

- Please email any guild or fiber related information to [Susan Lolli](#). Put MWG Newsletter in the subject line.

## THF Catalog

MWG members Chris and Richard Jeryan again have their limited edition handwoven scarfs in the Henry Ford Christmas Catalog.



<http://giftshop.thehenryford.org/a542/handwoven-twill-scarf.html>

## ArtPrize 2013

it is a definite love/hate relationship.

This year I am trying to use the fall colors as an inspiration in my color choices. I tend to use a purple/blue/red palette and have started to push myself into color ways that I am not that comfortable with. I just wove a series of brown alpaca scarves that are sitting here awaiting me and my fringe twister. I dyed some silk scarves in browns, oranges and gold. Unfortunately the brown stock that I grabbed was a bit past its prime, OK it was really old. I ended up with a very strange muted bronze. I figured that I could always over dye them if they didn't sell so I ironed and tagged them. There were eight of them, I sold two at my first show with them and a gallery selected five more. The last one was chosen by a customer in the gallery while I was there dropping off work. Just shows that sometimes what you think of as a mistake speaks to someone else.

Do you find that you change your color palette with the seasons? Are there colors that you are afraid to use? Please remember that we have an exhibit, sale and some wonderful programs coming up. I hope to see many of you there.

Andrea Anderson

## ANNUAL EXHIBIT

MWG Costick Center  
Exhibit  
October 18, 2013 -  
December 6, 2013



**Who:** All members are asked to submit at least one item.  
This is a non juried show.

**Intake:** Friday October 18 from 11 a.m. to 12 p.m.  
Intake forms will be available at that time

**Where:** Costick Center, 28600 Eleven Mile Rd.  
Farmington Hills, MI 48336, (248) 473-1800

If unable to bring your items during the intake, please contact another member who can bring your items or contact Boisali Biswas and drop it at her house.

Boisali Biswas  
5440 Claridge Lane,  
West Bloomfield, MI 48322  
248-737-3860



A giant quilt was the top prize winner of the 2013 ArtPrize in Grand Rapids, Michigan.

<http://michiganradio.org/post/quilt-depicting-sleeping-bear-dunes-national-lakeshore-wins-top-prize-artprize-2013>

## 2013-2014 Board Members

**President/Chair:** Andrea Anderson

**Vice President/Co-Chair:** Nancy Slutsky

**Secretary:** Chris Jeryan

**Treasurer:** Joan Koelsch

**Programs:** Loretta Oliver and Nancy Peck

**Membership:** Arlene Gendelman

**Hospitality:** Karen Folland

**MLH Representative:** Ken Allen

**Housing:** Susan Lolli

**Publicity:** Judy Boesky

**Exhibits:**  
Boisali Biswas

**Library:** Carol Noffz

**Fiber Fare (Newsletter):**  
Susan Lolli

**Web:** Susan Lolli

## WebSite Link

Michigan Weavers Guild

# Fourth Annual Michigan Weavers Guild Winter Market

Come join us for a fun day of showcasing our work and selling it to the public. This is our fourth year of doing it and we now have an actual following. In the past we had people who stopped by on their way into or out of the building. Now there are people who come just for our sale.

We have found that things priced under \$50.00 sell best, but there have been sales of higher priced items. People are looking for dyed and handspun yarn, you might want to make these into 1 - 1.5 oz skeins. If you have Christmas ornaments or holiday related items please bring them.

Please only bring fiber related items, they need not be handwoven, but they must be fiber. You will be responsible for your own sales. There is no fee for a table, you pay 25% of your sales to the Cultural Arts Department - be prepared to pay immediately after the sale.

If you have any questions or want a spot in the sale please contact:

Andrea Anderson 248-848-9880 or  
[Weavermom@aol.com](mailto:Weavermom@aol.com)

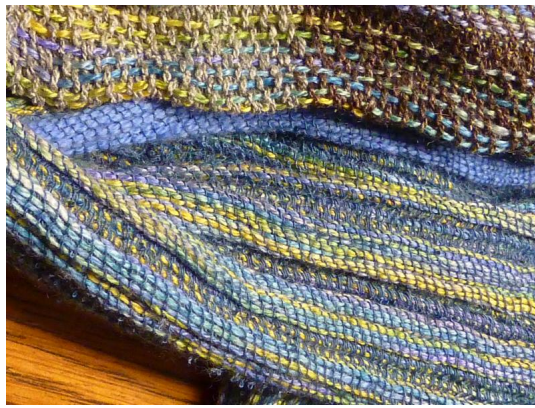
## September Program Revisited



Our 2013 - 2014 program year was off to a great start with Nancy McRay, former owner of Woven Art in East Lansing speaking on 'Collapse Weave'.

She shared her thoughts on how she classifies the types of weaves in this category along with sharing slides and samples of her explorations.

See us on Facebook



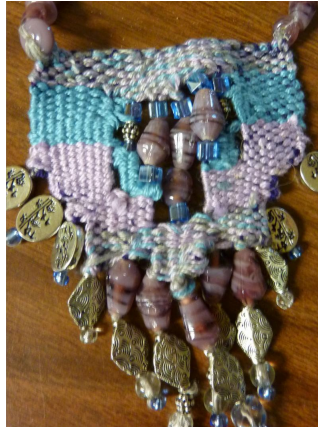
---

## September Program Part II - 2013 Fiber Challenge Results!

Five people shared their results of the 2013 Summer Challenge. It was a chance to try to create something with materials, techniques or a color palette that you don't normally work with. It was interesting to see how each person included the components presented to them.

We hope more of you will take the 2014 Summer Challenge.

**Karen Folland** decided to knit a number of items with the yarn she was provided with - along with making a tassel.



**Joan Koelsch** - who did not like the color palette she was given, decided to try a new technique for jewelry that includes some non-loom weaving.

**Susan Lolli** - added the 20+ items she was given to the front of a tote bag.



**Loretta Oliver** used a potholder loom to make a scarf with her yarn.





**Nancy Peck** made a vest with some of the yarn she was supplied with along with adding the felted scarf provided as a removable collar.

Forward to a friend



[Forward email](#)



This email was sent to mary@villageweaver.com by [slolli@comcast.net](mailto:slolli@comcast.net) |  
Instant removal with [SafeUnsubscribe™](#) | [Privacy Policy](#).

Michigan Weavers Guild | 4157 Colonial Dr. | Royal Oak | MI | 48073

