



**MARCH  
20-22**

### *Elisabeth Hill Workshop*

*For pre-registered participants*

*Church opens as 9 am with  
workshop beginning at 9:30*

### **In This Issue**

March Program  
Presidents Letter  
February Dye Day  
MWG Library News  
HGA Inspirations  
Looking for a Weaver  
Summer Challenge  
In the Media

### **NEXT BOARD MEETING**

Wednesday, March 20 1:00  
pm at Andrea Anderson's

### Notes from January Board Meeting

can be downloaded above



### **March Program Elisabeth Hill on "Apron Strings"**

**Saturday, March 22, 2014 at  
12:30p.m.**

**General Meeting at noon**

**At Peace Lutheran Church,  
17029 West 13 Mile Road,  
Southfield, MI 48076-7749**

Everyone needs a flattering and practical apron in order to proceed with their creative lives, whether in the studio or in the kitchen. Using a PowerPoint, Elisabeth will present step-by-step instructions on how to weave the fabric and sew the apron perfect for all your creative endeavors. She will have detailed handouts with sources for patterns, notions and materials as well as sample apron styles. Guild members are encouraged to bring their own favorite aprons to analyze and discuss features and fit.

Elisabeth Hill has been weaving since 1995, and recently received her Master Weaver certificate from Hill Institute in Florence, MA. She says, "I am a make-y person according to my youngest son. I love to knit, spin, dye, sew and bake, but I love to weave most of all. I have a 36" Schacht floor loom, a 60" Harrisville rug loom and an 60" AVL "antique doobby 1" loom and . . . a very supportive husband."

Her web site is <http://plainweave.net>

## Presidents Letter - March 2014

### Next Newsletter Deadline

**Saturday  
April 5, 2014**

- Please email any guild or fiber related information to [Susan Lolli](#). Put MWG Newsletter in the subject line.

### WE NEED YOUR SUPPORT VIA 2013-2014 DUES

- [Pay on-line](#)
- At the next meeting

### 2013 - 2014 SCHEDULE

#### Thursday-Saturday, March 20-22, 2014 - Workshop

- Leader: Elisabeth Hill
- Topic: Masters of Deflection

#### Saturday, March 22, 2014 - Program

- Speaker: Elizabeth Hill
- Topic: Apron Strings

#### Saturday, April 19, 2014

- Speakers/Panelists: Joan Sheridan and Mollie Fletcher
- Topic: From Start to Finish: Developing Themes, Concepts, Design and Color inspirations.

**Saturday, May 17, 2014**

Do you ever plan a weaving project then never quite get around to it? I tend to make warps ahead of time so that when I take one warp off of the loom I have another ready to go. Well sometimes there is a warp that I just don't get around to putting on the loom. I have two warps that I previously had on looms then pulled off for whatever reason. I have at times put these back on a loom, if you are careful when you take them off this works. If you are not careful it is better to just decide that your time is worth more than the yarn. Those warps are being pitched. One warp that I made several years ago has hung on my peg rack for over seven years.

This warp was for a double weave scarf which meant that it would require weaving it with two shuttles. Um, I would rather have dental work than to weave with two shuttles. This is the scarf that I had originally planned:



(I am sure that you have noticed that the edges are not equal. I would love to say that I designed it that way for an asymmetrical effect when in reality I didn't keep track of my warp as I was making it.)

For years I would sit in my studio and that warp hung there taunting me. I made the warp, I really should weave the scarf. I made the warp out of superfine merino so I really didn't want to dump it. Then again it involved two shuttles to weave it so I really didn't want to weave it. So it

stayed on the peg rack.

I have developed a scarf workshop and keep adding styles and samples to the roster. I decided to add another style that I learned in a workshop from Liz Williamson.

It is called the crinkle scarf. You thread a loom for a double weave scarf, but you only weave one layer at time, alternating the layers. Since you only weave one layer of the double weave the underside is unwoven and the scarf "crinkles" when you wash it. OK, I get that is confusing but it is a neat scarf. I realized that I could take this scarf weave the center of the scarf as a crinkle scarf and weave the edges plain. Then center would crinkle and the edges would ruffle. And this is what I got:



- Summer assignments,  
Stash Exchange,  
Potluck

**Normal Meeting Times and  
Location and Time (unless  
changed above)**

- 10:30 AM Board Meeting
- 11:30 PM Social Time  
- light refreshments.  
Bring your own bag lunch  
if you want.
- 12:00 PM General  
Meeting
- 12:30 PM Program

[Peace Lutheran Church](#)  
17029 West 13 Mile Road  
Southfield, MI 48076-7749



I am a retired yarn sales rep with a large stash of wool and cotton fibers. Due to health reasons and relocation here in northwestern Michigan, I'd like to find an outlet for inventory. There is quite a lot all labeled and sorted by type. I would be glad to provide more information as to brands and quantities If any of your members are interested.

You can contact me be phone at (231) 275-4996. Thank you.  
Lois Walker

-----  
2 spinning wheels for sale. One is a Louet wheel, (model Louet Julia ) the other is hand crafted by a Canadian woodworker. The wheels are beautiful, and I would love to see them put to good use. my phone number is 810-658-1425. Thank you.

mattgrajewski@icloud.org  
-----

# FEBRUARY DYE DAY REVIEW

Thirteen people took part in our annual dye day. This year it was presented by Bosali Biswas and vat dying with simple ikat was added.

Send pics of your yarn or your completed projects [here](#).



## MWG Library News

This month we will begin moving our library to a cabinet at the church. This should make the books much more accessible than they have been. It may take a couple months for us to get all the books moved. A list of the books can be found [here](#), or stop by at the meeting to browse.



24" Schacht Rigid Heddle Loom with stand 2 reeds 8 epi and 10 epi. \$175.00.

Contact Andrea  
at [Weavermom@aol.com](mailto:Weavermom@aol.com) or  
248-848-9880

-----  
--  
Check [Marketplace](#) on  
website for any new  
listings and for ideas for  
those looking for workshop  
equipment.

## 2013-2014 Board Members

**President/Chair:** [Andrea Anderson](#)

**Vice President/Co-Chair:** [Nancy Slutsky](#)

**Secretary:** [Chris Jeryan](#)

**Treasurer:** [Joan Koelsch](#)

**Programs:** [Loretta Oliver](#) and  
[Nancy Peck](#)

**Membership:** [Arlene Gendelman](#)

**Hospitality:** [Karen Folland](#)

**MLH Representative:** Karen  
Folland

**Housing:** [Susan Lolli](#)

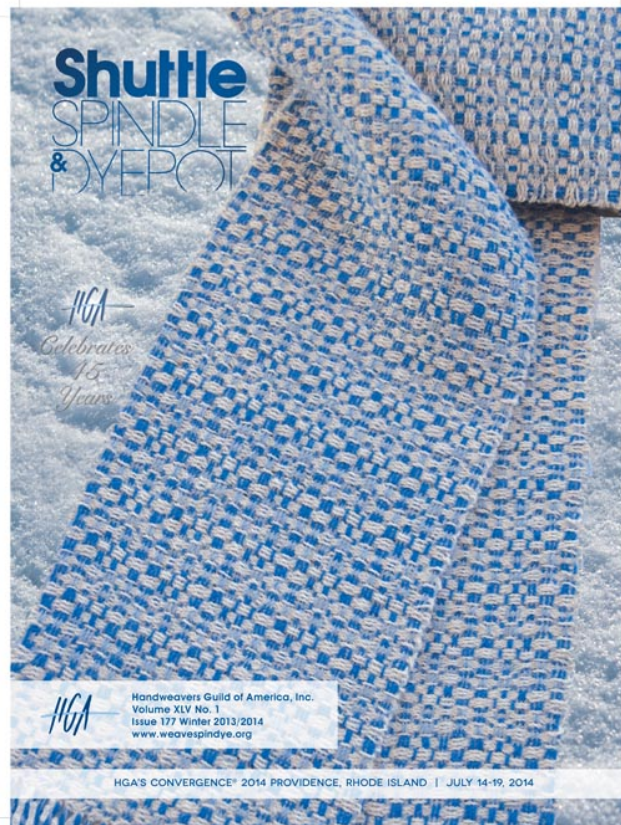
**Publicity:** [Judy Boesky](#)

**Exhibits:**  
[Boisali Biswas](#)

**Library:** [Carol Noffz](#)

**Fiber Fare (Newsletter):**  
[Susan Lolli](#)

**Web:** [Susan Lolli](#)



## HGA Inspiration

As part of the Hand Weavers Guild of America 45th Anniversary, MWG member Nancy Pack along with another weaver, were asked to design scarf using 80% Alpaca and 20% Fine Bamboo from Forever Lace Yarns.

Nancy designed two scarfs, one on 4 shafts and one on a rigid heddle loom. The four shaft scarf adorns this months HGA magazine. The issue includes instructions for the scarfs. Kits to make the scarves are available at the HGA website.



## LOOKING FOR A WEAVER

I'm looking for a weaver in or around Ann Arbor whom may want to sell her product at my open house Craft fair coming up in June

For more information on it go to events tab on my website  
[www.habitatreskillcenter.com](http://www.habitatreskillcenter.com)

Regards  
Peggy Jones

See us on  
Facebook

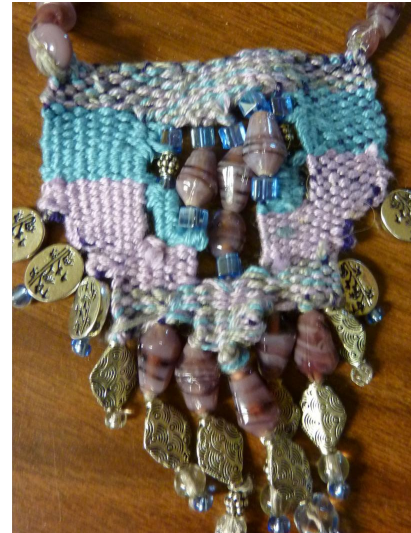


## W A N T E D

We are looking for ideas for this years version of our summer challenge.

To get the creative juices going here our two ideas:

- 1) A repeat of last summers challenge - using yarns supplied by another member.
- 2) Select a version of picture of a common element, ex) aurora borealis and make something based on that.



Email suggestions to Nancy Peck

## In the Media



The New York Times published an article about an exhibit at the American Folk Art Museum. Thirteen fashion designer made garments based on specific artworks from the collection.

You can read the article here, or see some of the images from the exhibit at the [museum website](#).

Forward to a friend



[Forward email](#)



Try it FREE today.

This email was sent to mary@villageweaver.com by [slolli@comcast.net](mailto:slolli@comcast.net) |  
Instant removal with [SafeUnsubscribe™](#) | [Privacy Policy](#).

Michigan Weavers Guild | 4157 Colonial Dr. | Royal Oak | MI | 48073